




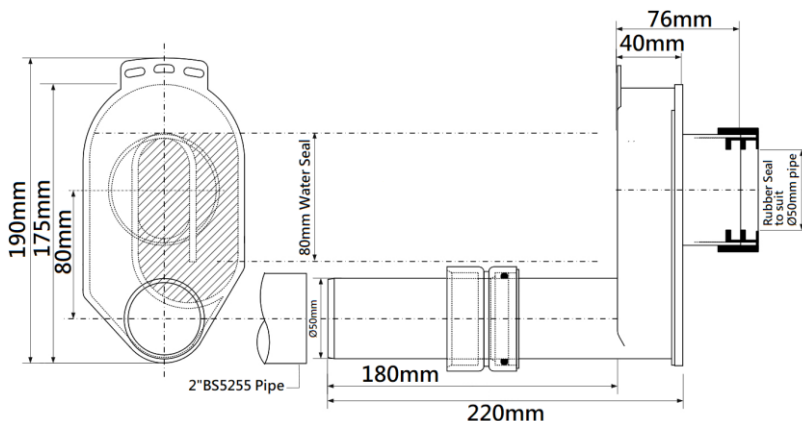
PROJECT		REF		REV	ITEM CODE	
LOCATION		DATE			PAGE	

## SANITARY WARE SPECIFICATION SHEET

Item Descriptions	McAlpine (UK) Urinal bowl syphonic "P" trap	Illustration/ Drawing 
Model	HCUP50UK	
Material / Finish	Polypropylene / White	
Manufacturer	McAlpine & Co. Ltd	
Source	Acme Sanitary Ware Co. Ltd Mr. Eric Wong/ Mr. Don Yuen	
Contact Tel/Fax	(852) 2388-7171 / (852) 2710-8012	
E-mail	acme@acmesanitary.com.hk	
Website	www.acmesanitary.com.hk	

**Syphonic Trap with inlet to suit continental style syphonic urinal bowl to create a 75mm water seal trap. Outlet to suit 2" BS EN 1329-1:2000 solvent weld pipe**

- 75mm Water Seal
- Outlet to suit 2" BS EN 1329-1:2000 solvent weld pipe
- Suits Continental Style Syphonic Urinal Bowl
- Manufactured in polypropylene
- Conforms to BS EN 274-1:2051



Note:

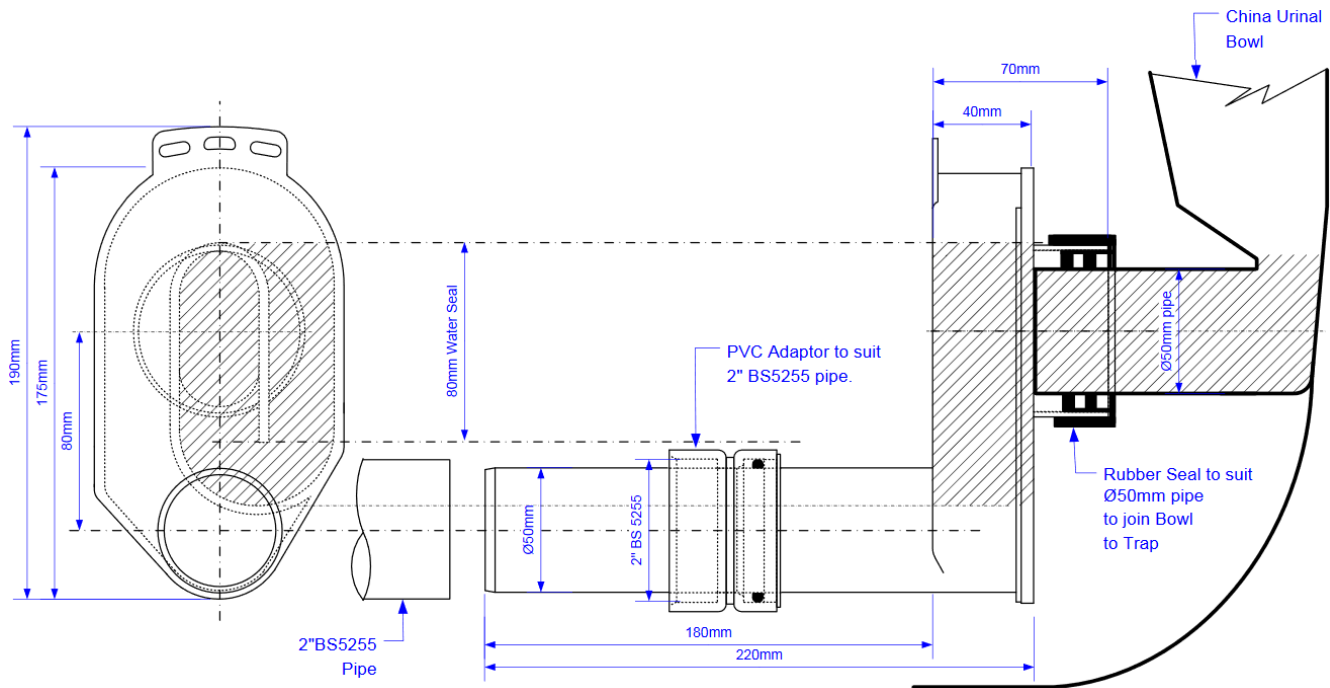


PROJECT		REF		REV	ITEM CODE	
LOCATION		DATE			PAGE	

**Installation Instructions For:**

# HCUP50UK

Designed for use only with a syphonic urinal bowl having a horizontal spigot outlet. The seal depth is measured in combination with the urinal.



**Fitting Instructions:**

- 1) Solvent Weld the PVC 2" BS5255 x 50mm DIN adaptor to 2" waste pipe (2.2" OD).
- 2) Position the body and ensure the 50mm plain tail outlet passes through the bore of the adaptor without dislodging the 'O' ring. Ensure the 'O' ring is accessible should replacement be needed.
- 3) Secure the body to back panel prior to offering up the urinal.

**Note:** If connecting adaptor to ABS Pipe, ensure suitable PVC/ABS solvent is used.

Note: